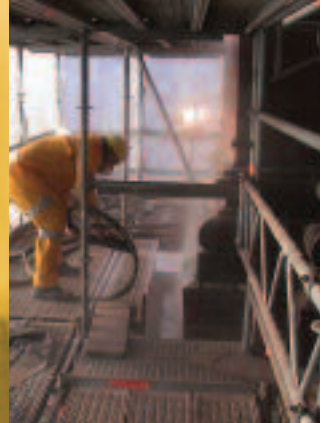




C35-10-C76
Portable Air Compressors



Intelligent Air Technology



C35-10-C76 Portable Air Compressors

The latest CompAir Range of portable compressors incorporate the very latest technological advances and manufacturing processes to provide users with a portable supply of economic and reliable compressed air.

CompAir's experience in the design and manufacture of high quality portable compressors spans almost 200 years. Today's models are the result of an intensive development program, and deliver the high performance and reliability demanded by users.

A wide variety of users rely on CompAir compressors when there is a demand for portable high quality compressed air. C35-10 - C76 compressors provide outputs from 3.5 to 7.6 m³/min [122.5 - 266 cfm] at pressures between 7 and 14 bar g [100 - 200 psi g].

On going investment in the latest design and manufacturing tools, and rigorous implementation of ISO 9001 approved quality systems ensure you take delivery of a reliable, high quality product.



Features

Tool storage area

Enough room to store two hammers, picks or any other pneumatic tools.

Maximum efficiency

Engine speed is adjusted automatically to ensure it is optimal for the air consumption, guaranteeing the most economical operation.

Deutz Diesel engine

Conforms to the latest emission regulations as well as offering low fuel consumption and automatic bleeding of the fuel system. The high power reserves of the motor also allows for operation in ambient temperatures up to 50°C [122°F].

Problem Free Operation

The rear mounted control panel protects the operator from passing traffic and is easily accessible providing monitoring of the final compressor and engine oil temperatures as well as the engine oil pressure. The panel also indicates working air pressure, operating hours and low fuel level. The machine is fitted with automatic safety shut downs for abnormal temperatures and pressures.

Adjustable Hitching Height

A variable coupling height between 350 and 1000 mm [13.8 - 39.4 in] permits safe and easy towing with a wide variety of vehicles while the wide wheel gauge provides additional stability at higher speeds. A straight towbar is also available as an option.

Easy to Service

All of the service elements are located in a grouped service area on one side of the machine to allow for easy access.

Transparent Fuel Tank

The filling level can be seen immediately and the high mounted leak proof connections prevent accidental spillage.

Advanced Compressor Design

The compression elements designed in house and manufactured to exact tolerances provide better sealing during compression and require lower power input than conventional rotors.

Corrosion Protected

The canopy panels are completely galvanised and powder coated to prevent corrosion.

Separate Engine and Compressor filters

The two stage filters have a long service life even in very dusty conditions and the automatic maintenance indicators guarantee optimum use of the filter elements.

Jockey Wheel

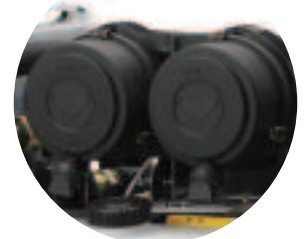
The compressor can be easily moved by the operator without external help.



Road Light System



Tool Storage Area



Separate Engine and Compressor Filters



Control Panel



Pneumatic hose reel

Model		C35-10(G)	C38(G)	C38GS	C42(G)	C50
Operational Specifications						
Free Air Delivery at Rated Pressure	m ³ /min [cfm]	3.5 [122.5]	3.8 [133]	3.8 [133]	4.2 [147]	5 [175]
Rated Operating Pressure	bar g [psi g]	10 [145]	7 [100]	7 [100]	7 [100]	7 [100]
Generator Size (220/400V)	kVA	(8 or 12)	(12)	8	(8 or 12)	N/A
Oil Capacity Compressor System	litres [gal]	9 [2]	9 [2]	9 [2]	9 [2]	9 [2]
Engine	Deutz	F3M2011	F3M2011	F3M1011	F3M2011	F3M2011
Full Load Speed	rpm	2700	2700	2700	2700	2700
Output at Rated Speed	kW [bhp]	35.5 [47.6]	35.5 [47.6]	35.5 [47.6]	35.5 [47.6]	35.5 [47.6]
Fuel Tank Capacity	litres [gal]	60 [13]	60 [13]	60 [13]	60 [13]	60 [13]

WeiWght*						
Working Weight (wet)	kg [lb]	828 (893) [1825 (1969)]	828 (893) [1825 (1969)]	893 [1969]	828 (893) [1825 (1969)]	878 [1936]

Model		C55-14	C60-12	C65-10	C62(G)	C62HS***	C76(G)
Operational Specifications							
Free Air Delivery at Rated Pressure	m ³ /min [cfm]	5.5 [192.5]	6.0 [210]	6.5 [227.5]	6.2 [217]	6.2 [217]	7.6 [266]
Rated Operating Pressure	bar [psi]	14 [203]	12 [174]	10 [145]	7 [100]	7 [100]	7 [100]
Generator Size (220/400V)	kVA	N/A	N/A	(8 or 12)	(8 or 12)	N/A	(8 or 12)
Oil Capacity Compressor System	litres [gal]	14 [3]	14 [3]	14 [3]	14 [3]	14 [3]	14 [3]
Engine	Deutz	BF4M2011	BF4M2011	BF4M2011	F4M2011	BF4M2011	BF4M2011
Full Load Speed	rpm	2600	2600	2600	2600	2600	2600
Output at Rated Speed	kW [bhp]	61 [81.8]	61 [81.8]	61 [81.8]	46.5 [62.4]	61 [81.8]	61 [81.8]
Fuel Tank Capacity	litres [gal]	120 [26]	120 [26]	120 [26]	120 [26]	120 [26]	120 [26]

Weight*							
Working weight (wet)	kg [lb]	1100 [2425]	1100 [2425]	1100 (1175) [2425 (2590)]	1100 (1175) [2425 (2590)]	1100 [2425]	1100 (1175) [2425 (2590)]

Overall Dimensions		C35-10-C50	C55-C76	Outlets		
Overall Length	mm [in]	3195/3407 [125.8/134]	3578/3792 [141/149.2]	C55-C76	Plug	1 1/2"
Overall Width	mm [in]	1490 [58.7]	1580 [62.2]		Ball valve	3 x 3/4"
Height	mm [in]	1336 [52.6]	1390 [54.7]	C35-10-C50	Ball valve	2 x 3/4"
Canopy Length	mm [in]	1750 [68.9]	2050 [80.7]			
Wheel Track	mm [in]	1300 [51.2]	1355 [53.3]			
Ground Clearance	mm [in]	260 [10.2]	295 [11.6]			
Tyre size		165SR13	185R14reinf			
				Noise Levels		
				Sound Power*	dB(A)L _{wa}	98
				Sound Pressure**	dB(A)L _{pa}	69

*Sound Power to 2000/14 EG

*** High altitude model for use up to 5000M above sea level.

* Weight without options

** Sound pressure to PNEUPOP PN8NTC2.2 at 7m

Options

Built-in aftercooler with automatic condensate separation

Reduces the moisture content in the compressed air preventing the abrasive material in blast pots from clogging during blast cleaning operations.

Built in air re-heater

In addition to the aftercooler this CompAir patented air re-heater inhibits tools from "freezing" as heat transferred from the compressor oil delays the development of condensate in air delivery hoses when operating in cold humid conditions.

Air Treatment Packages

Super fine filtration according to ISO 8573.1 reducing residual oil content in air to less the 0.01 ppm

Built in lubricator

Ensures that tools are well maintained reducing the risk of tools "freezing" without the need for daily site refills.

Base Mount

Allows for permanent installation on site or on the load area of a commercial vehicle.

Automatic Pneumatic Hose reel

Protects the air hose from damage and allows for faster set up on arrival at site

Braked or unbraked axles

Where weight permits legal towing without brakes a budget unbraked running gear option is available.

Road lights system including fog light

A complete system that conforms with EEC lighting regulations ready to plug into the towing vehicle

Customer's paint colour and vinyls (min. quantity 10 units)

Provides distinctive sight identity and assists in traceability in the event of loss or theft.

Engine overspeed shutdown valve

An overspeed valve in the engine inlet port ensure immediate shutdown in the event of ingestion of inflammable gas to prevent damage from over-speeding engine.

Exhaust Spark Arrestor

To reduce fire risks during operation in hazardous areas such as petro-chemical plants and forests.

Generators

Built in 8 or 12 KVA 220/400V 3 phase A/C generators allow the compressors to produce electrical power instead of compressed air (6KVA 110V single phase generator also available). On the synchronous generator models sufficient energy is available to run air tools as well as leaving enough power in reserve to run electrically powered machines such as immersion and sump pumps.

Oil temperature control valve

Ensures safe operation of the machine in case of low ambient temperature.

Fuel filter with water separator

Ensures safe operation where diesel fuel may be contaminated with water.

Key Features

Low Fuel Consumption

High Efficiency

Low Emissions

High Ambient Capability

Simple Controls

Deutz Engines

Increased Reliability



Intelligent Air Technology

Compressed air solutions for every application

Compressors

0.1 - 43 m³/min
[3.5 - 1505 cfm]
0.75 - 260 kW
[1 - 349 bhp]

Lubricated

Rotary Vane

Single Stage Screw

Speed Regulated Screw

Piston

Portable

Oil-Free

Two Stage Screw

Water-Sealed Screw

Piston

Turbo

Complete Accessories Programme

Filters and Dryers

Cooling Systems

Heat Recovery

Condensate Management

Air Receivers

Multi-Set Controllers

Lubricants

Value Added Services

Air Audit

Performance Reporting

Utility Air

Performance Contracting

Complete Service for Compressed Air Technology

Engineering of Complete Compressor Stations

Local Service Centres

Guaranteed Parts Availability



www.CompAir.com
Email sales@compair.com

CompAir policy is one of continuous improvement and we therefore reserve the right to alter specifications and prices without prior notice. All products are sold subject to the Company's conditions of sale.

Brochure re-order ref: 98700-544E - B&N 01/2006

